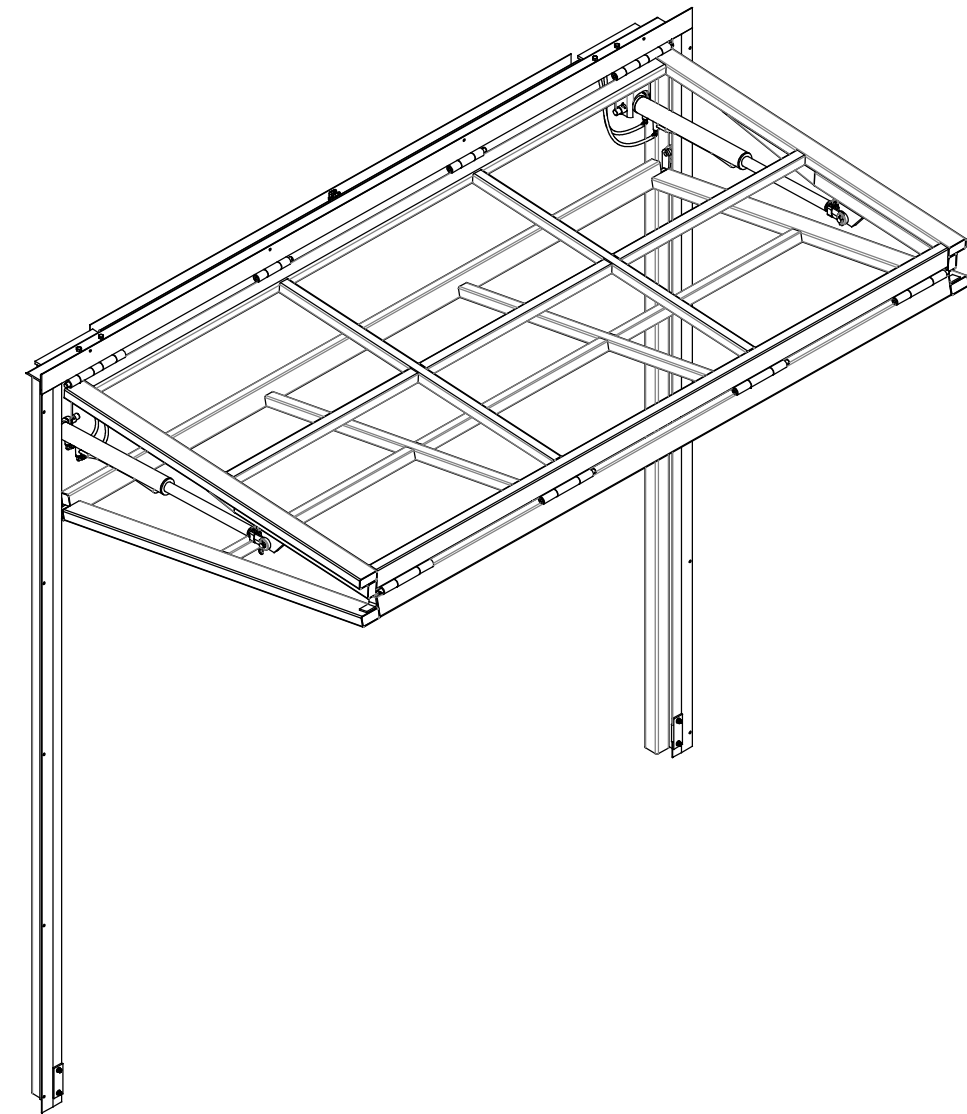


135 MCLEOD AVENUE, SOUTH  
 PLATO, MN 55370  
 (320) 238-2616  
 INFO@CROWNDOORS.COM

# SST-II HYDRAULIC BI-FOLD SYSTEM



**PRELIMINARY  
 NOT FOR CONSTRUCTION**

**PROPRIETARY AND CONFIDENTIAL**  
 THE INFORMATION CONTAINED WITHIN THIS DRAWING SET IS THE SOLE PROPERTY OF CROWN INCORPORATED. ANY REPRODUCTION - IN PART, OR AS A WHOLE - WITHOUT THE EXPRESSED, WRITTEN CONSENT OF CROWN INCORPORATED IS PROHIBITED

**IMPORTANT NOTICE:**  
 ALL DIMENSIONS SHOWN ARE CRITICAL TO PROPER DOOR OPERATION. IF ANY CHANGES ARE MADE, CONTACT CROWN INCORPORATED IMMEDIATELY. ANY CHANGES MAY INCUR ADDITIONAL CHARGES.

ALL PARTS NOT LISTED AS "BY OTHERS" TO BE PROVIDED BY CROWN INCORPORATED.

**SAMPLE DRAWINGS**  
 • THE FOLLOWING DETAILS REPRESENT TYPICAL CONDITIONS. DETAILS/DIMENSIONS WILL VARY BETWEEN INSTALLATIONS.  
 • SAMPLe DRAWINGS DO NOT REPRESENT ALL AVAILABLE OPTIONS - REFER TO QUOTATION.

**GENERAL NOTES**  
 • STRUCTURAL SUPPORT (JAMBS/HEADER) BY G.C.  
 • INSTALLER TO CAULK AROUND MOUNTING ANGLES  
 • MAXIMUM ALLOWABLE RISE OF FINISHED FLOOR IS 3/8"  
 • CROWN, INC. RESERVES THE RIGHT TO CHANGE/IMPROVE PRODUCTS WITHOUT PRIOR NOTICE  
 • THE INFORMATION CONTAINED WITHIN THIS DRAWING SET IS THE SOLE PROPERTY OF CROWN, INC. ANY REPRODUCTION - IN PART, OR AS A WHOLE - WITHOUT THE EXPRESSED, WRITTEN PERMISSION OF CROWN, INC. IS PROHIBITED  
 • CROWN, INC. WILL NOT BE HELD RESPONSIBLE FOR CODE VIOLATIONS

**LATERAL DRIFT AND VERTICAL DEFLECTION:**

TO MAINTAIN NORMAL OPERATION OF THE DOOR/WINDOW SYSTEM, MID-HEADER DOWNWARD DEFLECTION LIMIT AND LATERAL DRIFT LIMIT OF SURROUNDING STRUCTURE IS 3/8". MAXIMUM ALLOWABLE RISE OF FINISHED FLOOR BETWEEN JAMBS IS 3/8".

**STEEL MEMBERS:**

STEEL TUBE FRAME MEMBERS VARY IN SIZE, DEPENDING UPON ROUGH OPENING DIMENSIONS AND COVERING/CLADDING WEIGHT. LARGER OPENINGS AND HEAVIER COVERING OR CLADDING WILL REQUIRE LARGER STEEL COMPONENTS.

**TOLERANCE:** TOLERANCE FOR LOCATION OF VERTICAL AND HORIZONTAL STEEL TUBE MEMBERS IS 1/8"

**IMPORTANT NOTE:** DO NOT PRE-DRILL ROUGH OPENING

**PROPRIETARY AND CONFIDENTIAL**

THE INFORMATION CONTAINED WITHIN THIS DRAWING SET IS THE SOLE PROPERTY OF CROWN INCORPORATED. ANY REPRODUCTION - IN PART, OR AS A WHOLE - WITHOUT THE EXPRESSED, WRITTEN CONSENT OF CROWN INCORPORATED IS PROHIBITED

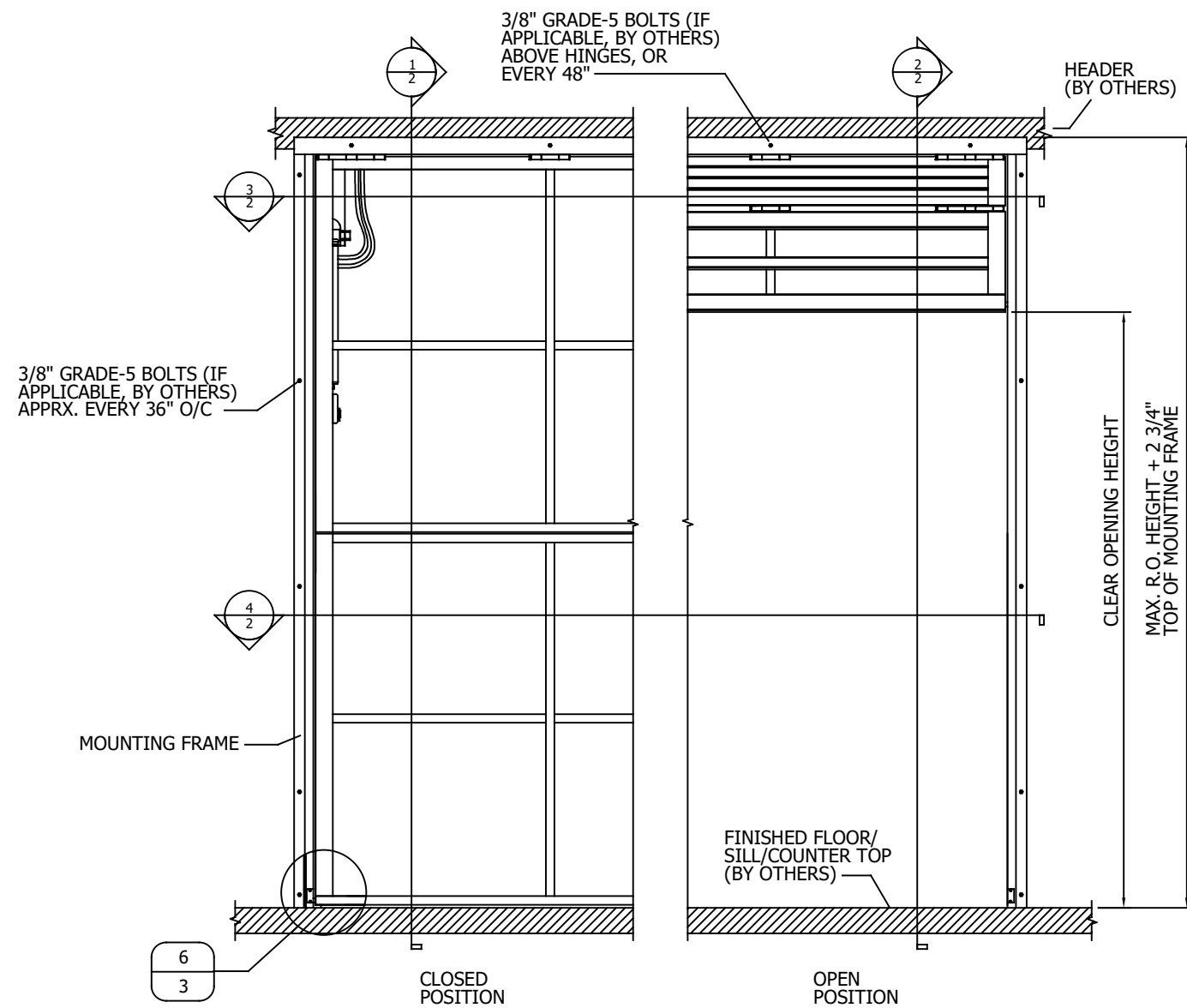
**IMPORTANT NOTICE:**

ALL DIMENSIONS SHOWN ARE CRITICAL TO PROPER DOOR OPERATION. IF ANY CHANGES ARE MADE, CONTACT CROWN INCORPORATED IMMEDIATELY. ANY CHANGES MAY INCUR ADDITIONAL CHARGES.

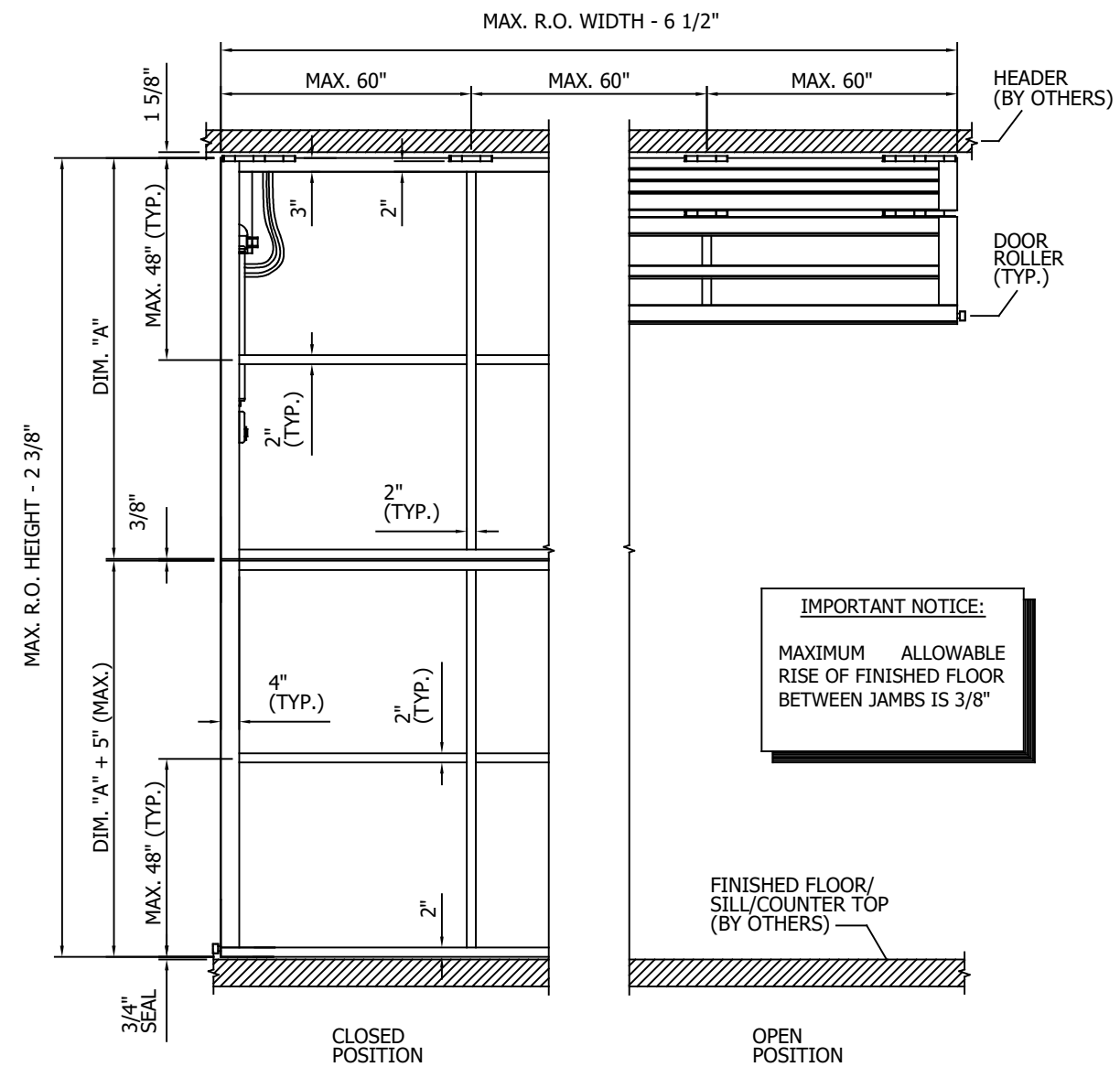
ALL PARTS NOT LISTED AS "BY OTHERS" TO BE PROVIDED BY CROWN INCORPORATED.



**SAMPLE DRAWING**



**1 DOOR PANEL w/FRAME - EXTERIOR VIEW**  
NO SCALE



**2 DOOR PANEL - EXTERIOR VIEW**  
NO SCALE

**IMPORTANT NOTICE:**  
MAXIMUM ALLOWABLE RISE OF FINISHED FLOOR BETWEEN JAMBS IS 3/8"

**SST-II HYDRAULIC BI-FOLD SYSTEM**  
**CROWN, INCORPORATED**  
PLATO, MINNESOTA, 55370

MODEL: SST-II BI-FOLD  
DRAWN: 8/2016

SHEET: **1.0**

**LATERAL DRIFT AND VERTICAL DEFLECTION:**

TO MAINTAIN NORMAL OPERATION OF THE DOOR/WINDOW SYSTEM, MID-HEADER DOWNWARD DEFLECTION LIMIT AND LATERAL DRIFT LIMIT OF SURROUNDING STRUCTURE IS 3/8". MAXIMUM ALLOWABLE RISE OF FINISHED FLOOR BETWEEN JAMBS IS 3/8".

**TOLERANCE:** TOLERANCE FOR LOCATION OF VERTICAL AND HORIZONTAL STEEL TUBE MEMBERS IS 1/8"

**IMPORTANT NOTE:** DO NOT PRE-DRILL ROUGH OPENING

**NOTES:**

APPROX. SYSTEM WEIGHT W/CYLINDERS:	9 LBS. P.S.F.
COVERING SYSTEM WEIGHT:	VARIES
APPROX. TOTAL DOOR PANEL WEIGHT w/COVERING:	TBD
STD. ELECTRICAL REQUIREMENTS:	208-230v, 1-PH
MOTOR:	TBD
POWER UNIT:	TBD
STD. WIND LOAD:	90 MPH EXP. C
APPROX. DOOR OPEN SPEED:	TYP. 14-15' PER MIN.
CYLINDER:	TBD
STD. FINISH:	RED-OXIDE, PRIMED

**PROPRIETARY AND CONFIDENTIAL**

THE INFORMATION CONTAINED WITHIN THIS DRAWING SET IS THE SOLE PROPERTY OF CROWN INCORPORATED. ANY REPRODUCTION - IN PART, OR AS A WHOLE - WITHOUT THE EXPRESSED, WRITTEN CONSENT OF CROWN INCORPORATED IS PROHIBITED

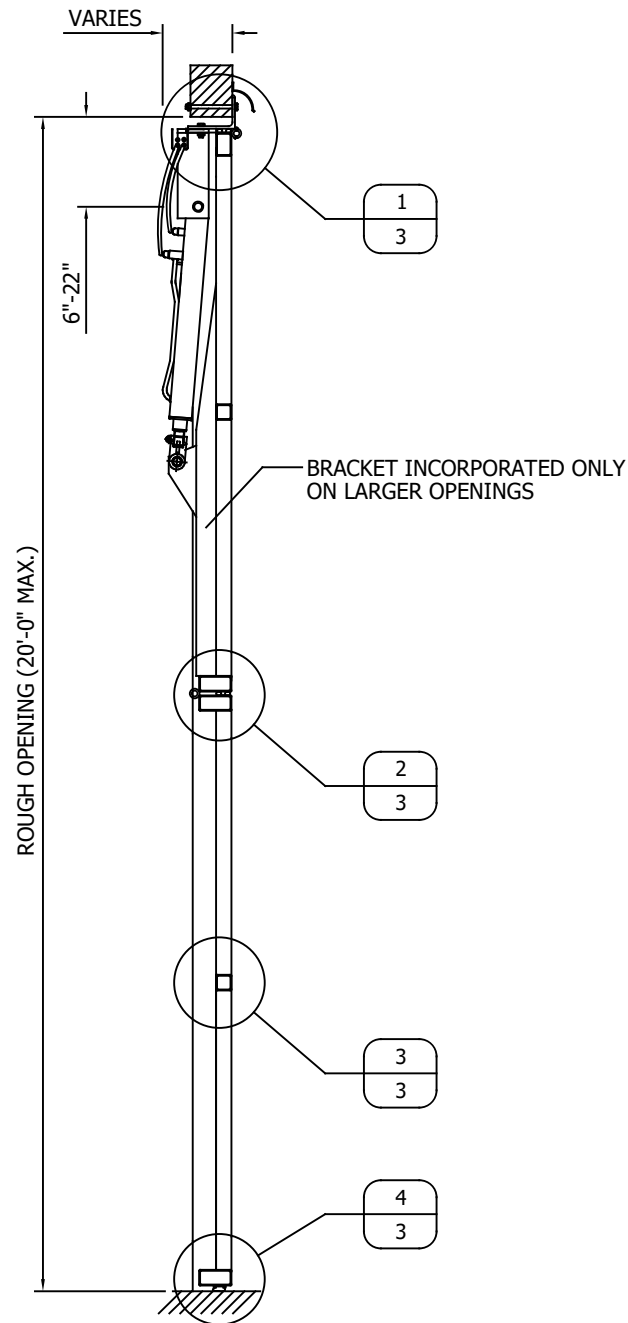
**IMPORTANT NOTICE:**

ALL DIMENSIONS SHOWN ARE CRITICAL TO PROPER DOOR OPERATION. IF ANY CHANGES ARE MADE, CONTACT CROWN INCORPORATED IMMEDIATELY. ANY CHANGES MAY INCUR ADDITIONAL CHARGES.

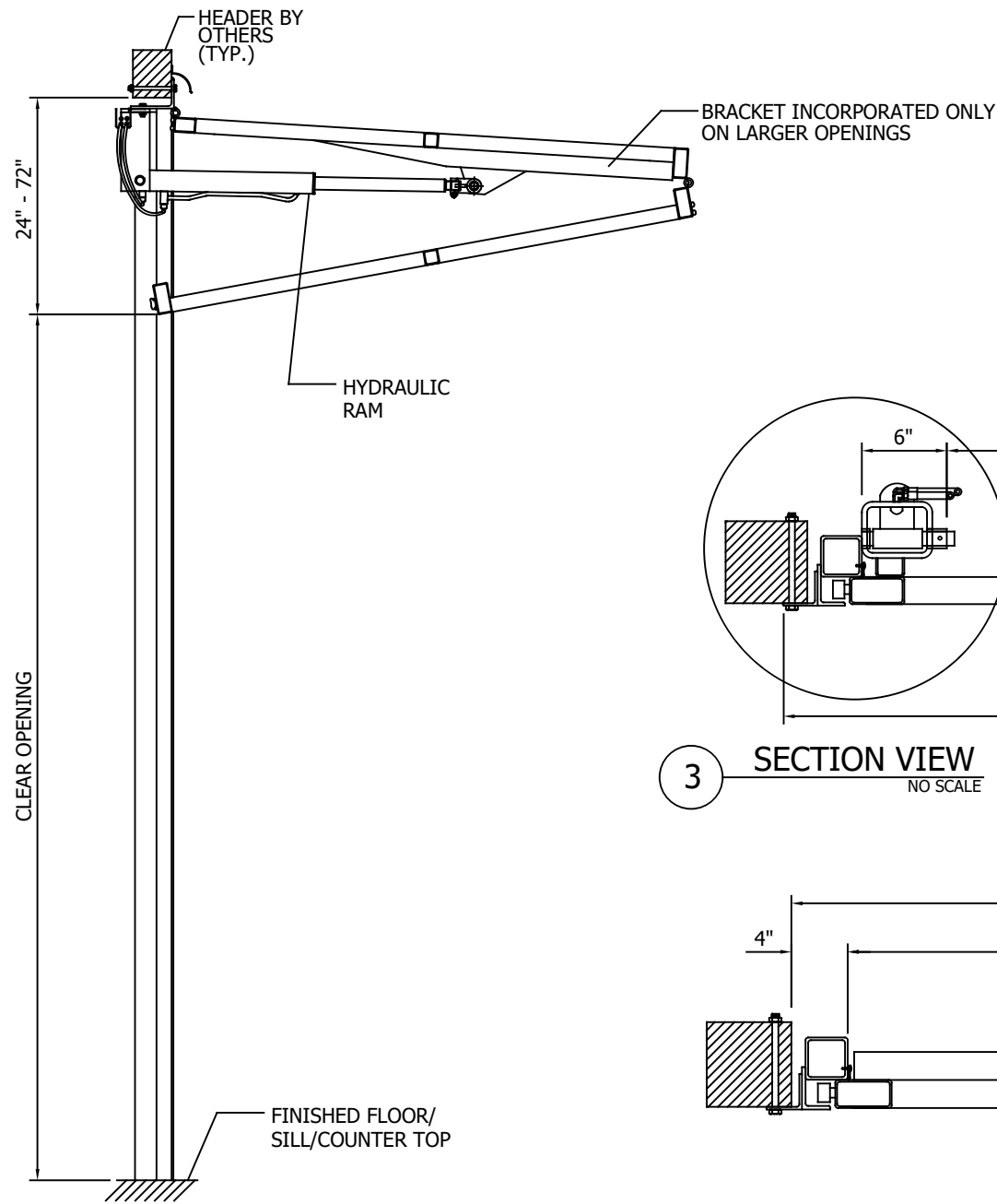
ALL PARTS NOT LISTED AS "BY OTHERS" TO BE PROVIDED BY CROWN INCORPORATED.



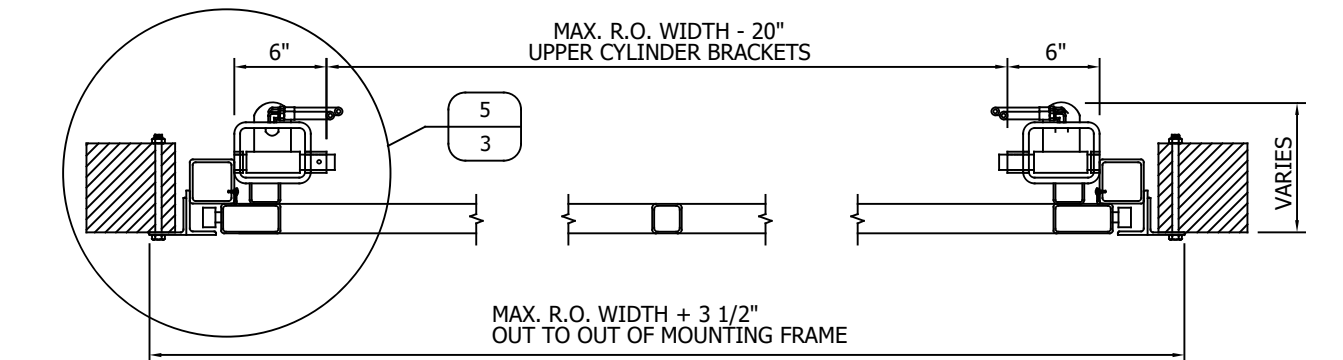
**SAMPLE DRAWING**



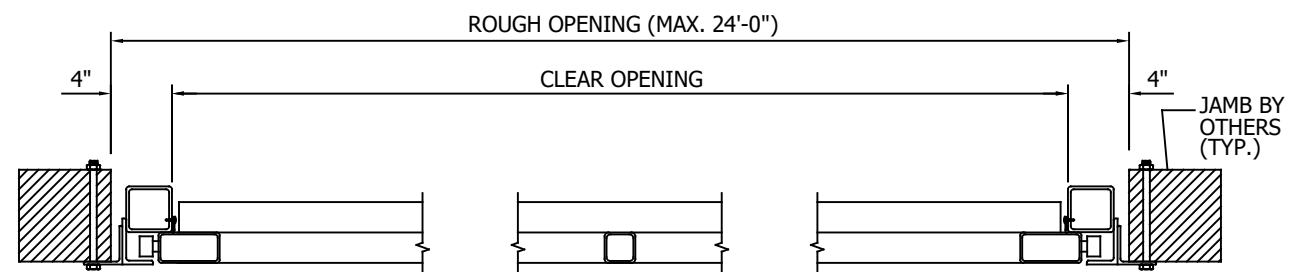
**1 VERTICAL SECTION**  
NO SCALE



**2 VERTICAL SECTION**  
NO SCALE



**3 SECTION VIEW**  
NO SCALE

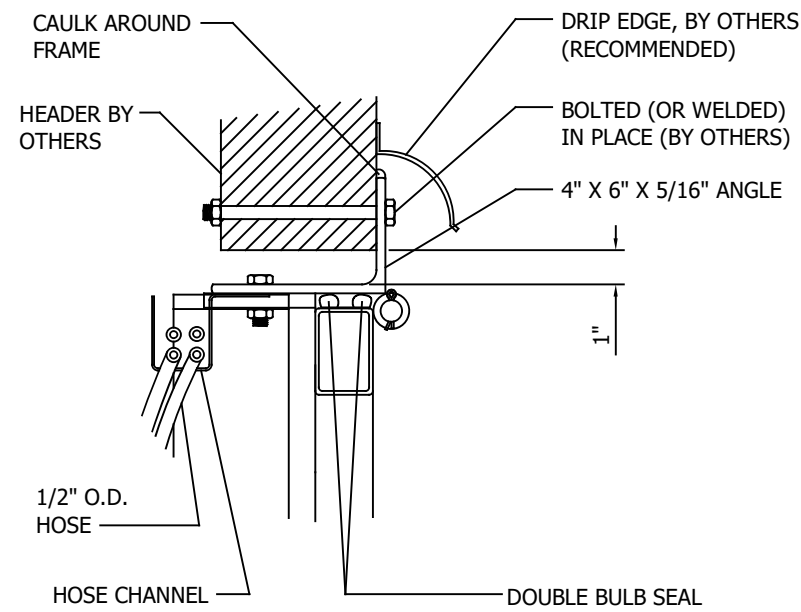


**4 SECTION VIEW**  
NO SCALE

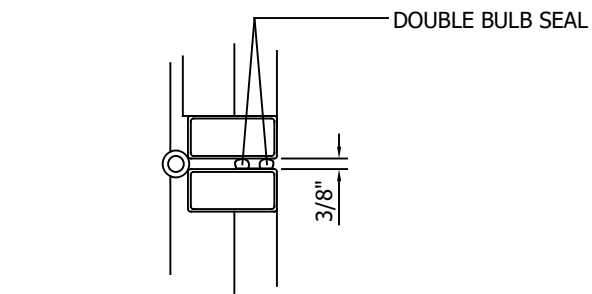
**SST-II HYDRAULIC BI-FOLD SYSTEM**  
**CROWN, INCORPORATED**  
PLATO, MINNESOTA, 55370

MODEL: SST-II BI-FOLD  
DRAWN: 8/2016

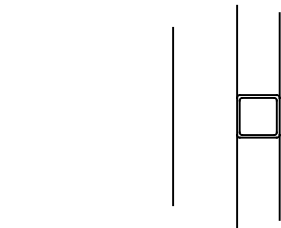
SHEET: **2.0**



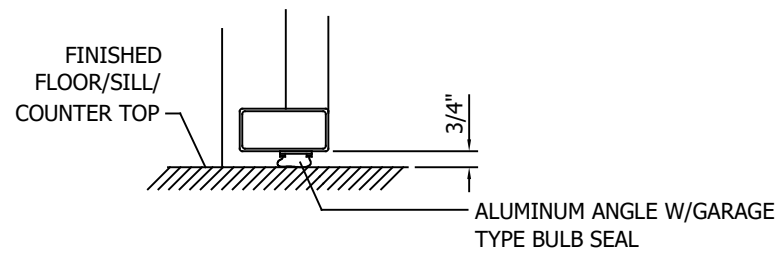
1 SECTION VIEW @ HEAD  
NO SCALE



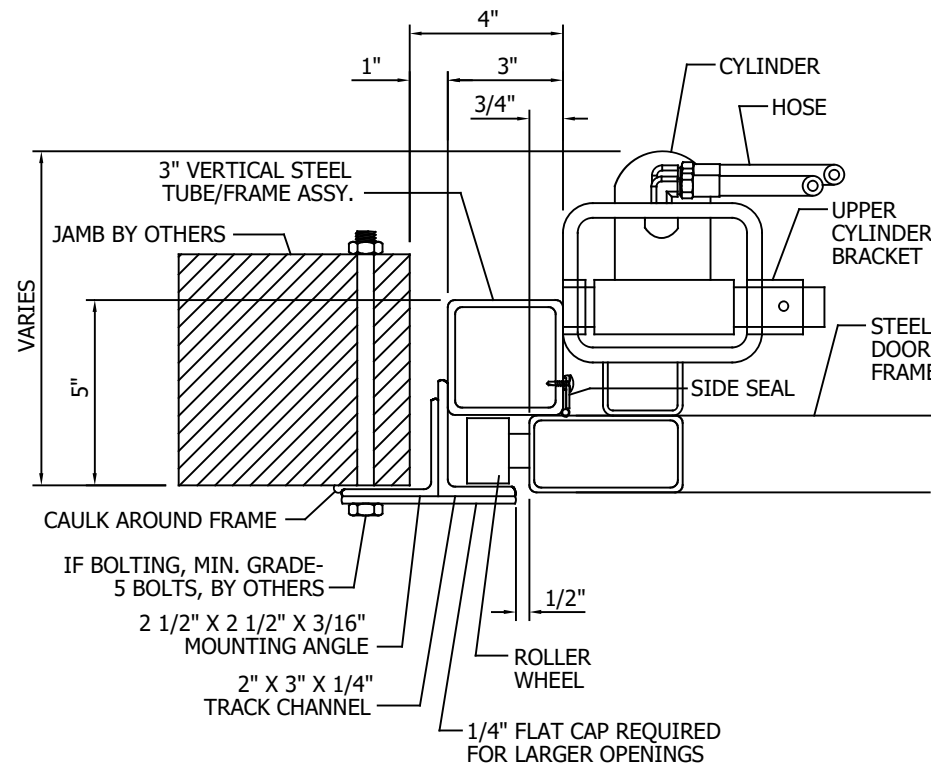
2 SECTION VIEW @ MID-HINGE  
NO SCALE



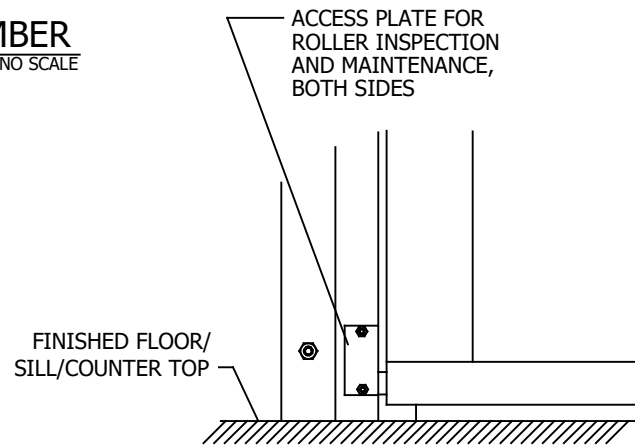
3 SECTION VIEW @ INT. MEMBER  
NO SCALE



4 SECTION VIEW @ BASE  
NO SCALE



5 SECTION VIEW @ JAMB  
NO SCALE



6 MAINTENANCE HATCH  
NO SCALE

PROPRIETARY AND CONFIDENTIAL  
THE INFORMATION CONTAINED WITHIN THIS DRAWING SET IS THE SOLE PROPERTY OF CROWN INCORPORATED. ANY REPRODUCTION - IN PART, OR AS A WHOLE - WITHOUT THE EXPRESSED, WRITTEN CONSENT OF CROWN INCORPORATED IS PROHIBITED

IMPORTANT NOTICE:  
ALL DIMENSIONS SHOWN ARE CRITICAL TO PROPER DOOR OPERATION. IF ANY CHANGES ARE MADE, CONTACT CROWN INCORPORATED IMMEDIATELY. ANY CHANGES MAY INCUR ADDITIONAL CHARGES.

ALL PARTS NOT LISTED AS "BY OTHERS" TO BE PROVIDED BY CROWN INCORPORATED.

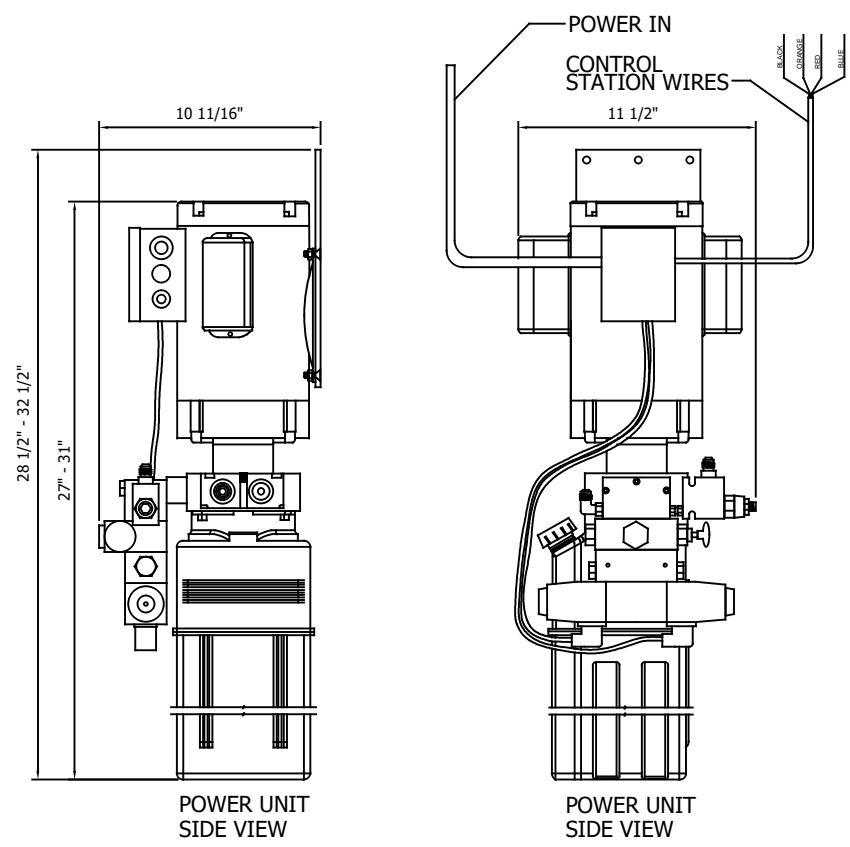


**SAMPLE DRAWING**

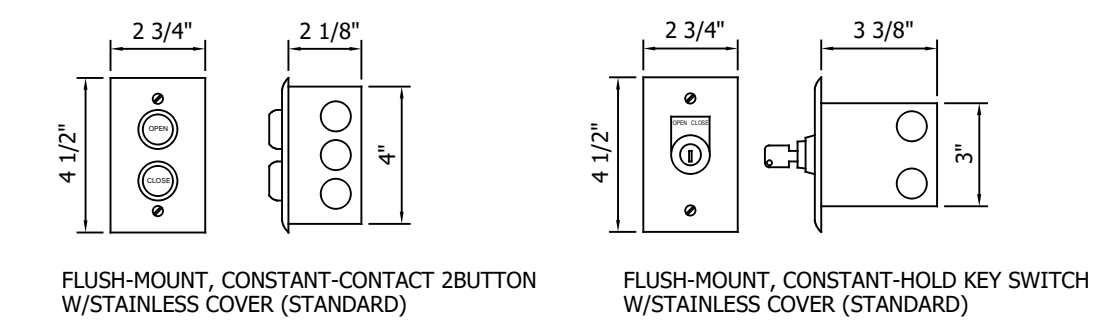
**SST-II HYDRAULIC BI-FOLD SYSTEM**  
**CROWN, INCORPORATED**  
PLATO, MINNESOTA, 55370

MODEL: SST-II BI-FOLD  
DRAWN: 8/2016

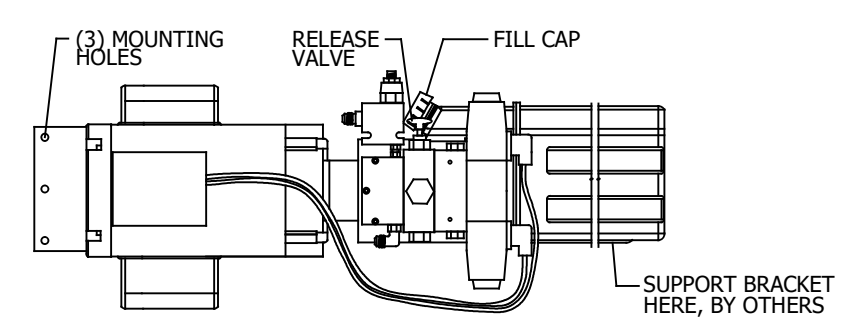
SHEET: **3.0**



POWER UNIT SIDE VIEW  
POWER UNIT SIDE VIEW

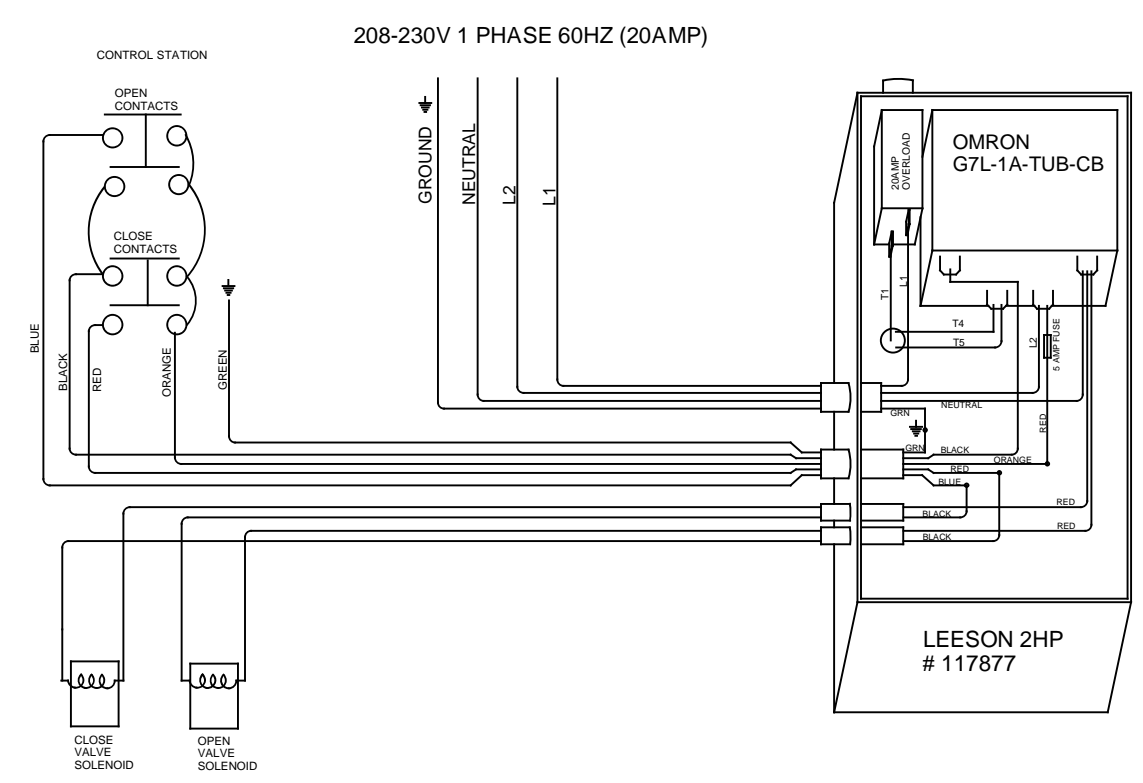


1 CONTROL OPTIONS  
NO SCALE

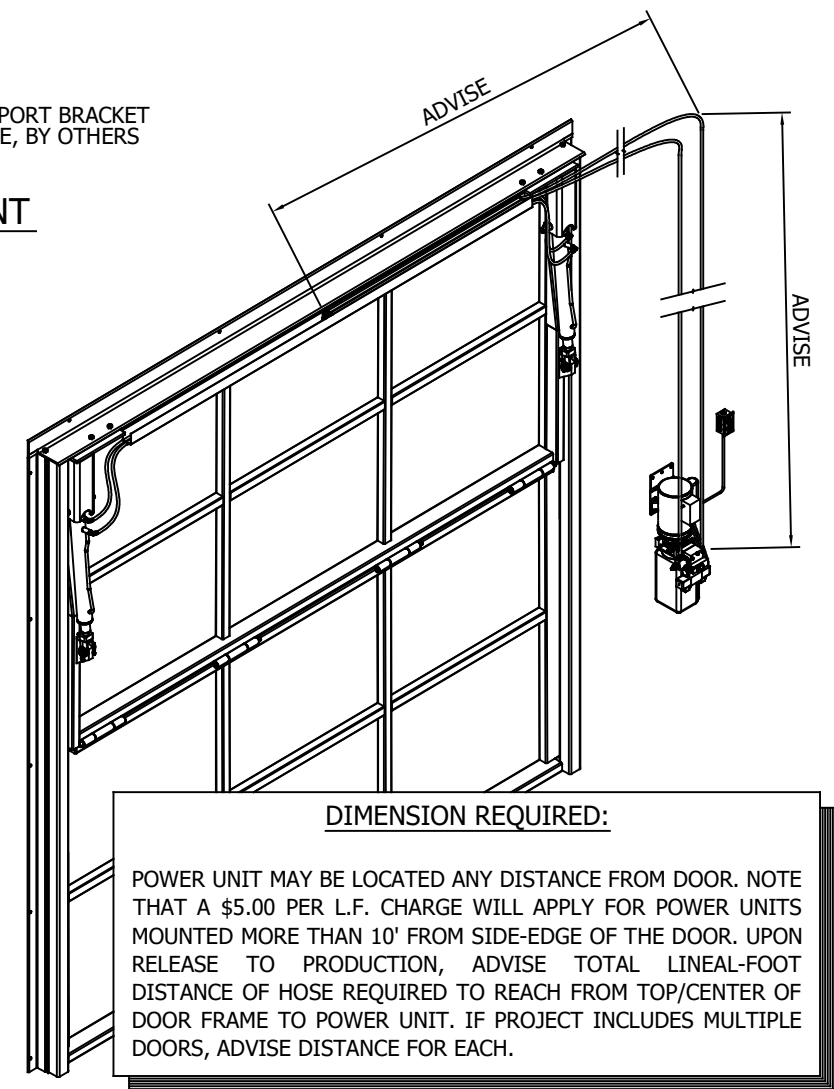


3 MOTOR UNIT - OPTIONAL HORIZ. MOUNT

2 MOTOR UNIT - STD. VERT. MOUNT  
NO SCALE



4 STANDARD WIRING SCHEMATIC



5 ISOMETRIC - INTERIOR VIEW

**PROPRIETARY AND CONFIDENTIAL**  
THE INFORMATION CONTAINED WITHIN THIS DRAWING SET IS THE SOLE PROPERTY OF CROWN INCORPORATED. ANY REPRODUCTION - IN PART, OR AS A WHOLE - WITHOUT THE EXPRESSED, WRITTEN CONSENT OF CROWN INCORPORATED IS PROHIBITED

**IMPORTANT NOTICE:**  
ALL DIMENSIONS SHOWN ARE CRITICAL TO PROPER DOOR OPERATION. IF ANY CHANGES ARE MADE, CONTACT CROWN INCORPORATED IMMEDIATELY. ANY CHANGES MAY INCUR ADDITIONAL CHARGES.

ALL PARTS NOT LISTED AS "BY OTHERS" TO BE PROVIDED BY CROWN INCORPORATED.



**SAMPLE DRAWING**

**SST-II HYDRAULIC BI-FOLD SYSTEM**  
**CROWN, INCORPORATED**  
PLATO, MINNESOTA, 55370

MODEL: SST-II BI-FOLD  
DRAWN: 8/2016

SHEET: **4.0**



**PROPRIETARY AND CONFIDENTIAL**  
 THE INFORMATION CONTAINED WITHIN THIS DRAWING SET IS THE SOLE PROPERTY OF CROWN INCORPORATED. ANY REPRODUCTION - IN PART, OR AS A WHOLE - WITHOUT THE EXPRESSED, WRITTEN CONSENT OF CROWN INCORPORATED IS PROHIBITED

**IMPORTANT NOTICE:**  
 ALL DIMENSIONS SHOWN ARE CRITICAL TO PROPER DOOR OPERATION. IF ANY CHANGES ARE MADE, CONTACT CROWN INCORPORATED IMMEDIATELY. ANY CHANGES MAY INCUR ADDITIONAL CHARGES.

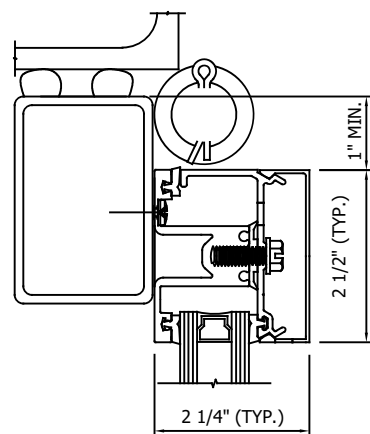
ALL PARTS NOT LISTED AS "BY OTHERS" TO BE PROVIDED BY CROWN INCORPORATED.

**SAMPLE DRAWING**

**SST-II HYDRAULIC BI-FOLD SYSTEM**  
**CROWN, INCORPORATED**  
 PLATO, MINNESOTA, 55370

MODEL: SST-II BI-FOLD  
 DRAWN: 8/2016

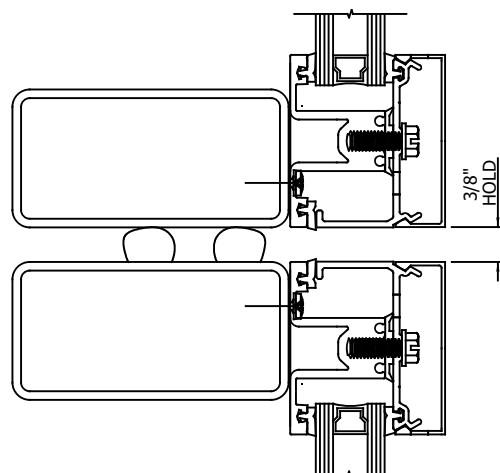
SHEET: **5.0**



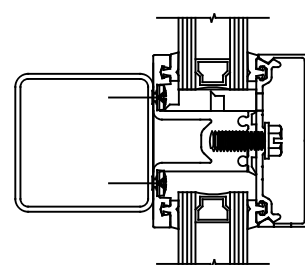
**1 FRONT-SET ASSEMBLY**  
 NO SCALE

**IMPORTANT NOTE:**

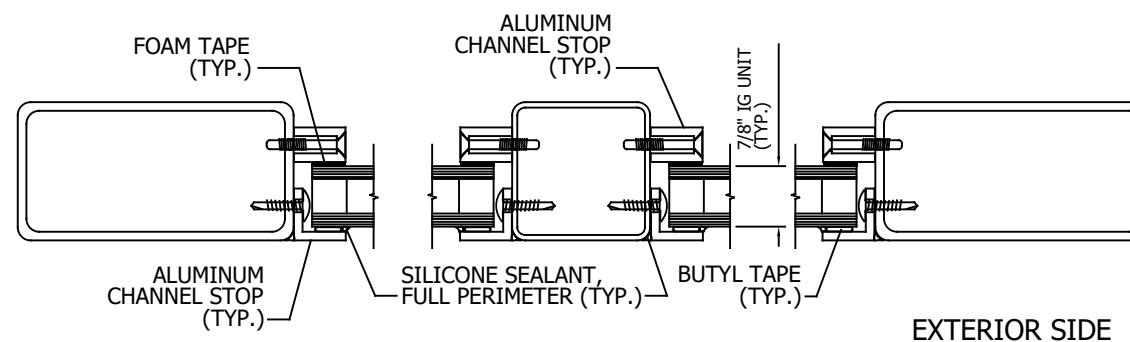
- ALL ALUMINUM RETAINER IS SHIPPED IN FULL-LENGTH PIECES, TO BE CUT TO SIZE AND/OR MITERED, IN FIELD
- DETAILS ARE FOR REPRESENTATION, ONLY, SHOWING CROWN STD. INSIDE-SASH AND FRONT-SET RETAINER SYSTEMS
- GLASS SHOWN IS MOST COMMON. OTHER GLASS TYPES/THICKNESSES ARE AVAILABLE



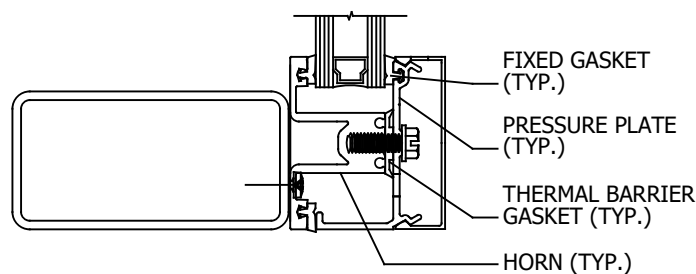
**2 FRONT-SET ASSEMBLY**  
 NO SCALE



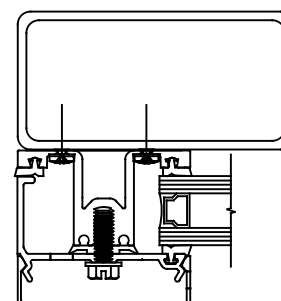
**3 FRONT-SET ASSEMBLY**  
 NO SCALE



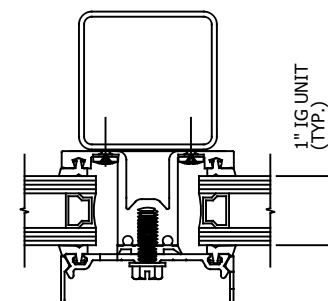
**5 INSIDE SASH ASSEMBLY**  
 NO SCALE



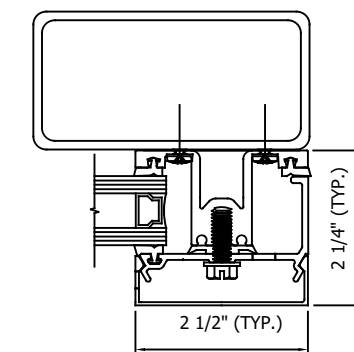
**4 FRONT-SET ASSEMBLY**  
 NO SCALE



**6 FRONT-SET ASSEMBLY**  
 NO SCALE



**7 FRONT-SET ASSEMBLY**  
 NO SCALE



**8 FRONT-SET ASSEMBLY**  
 NO SCALE